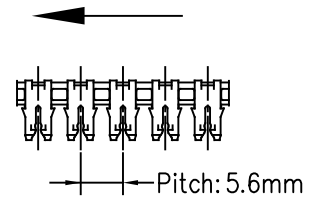
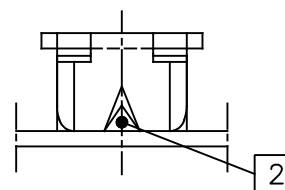
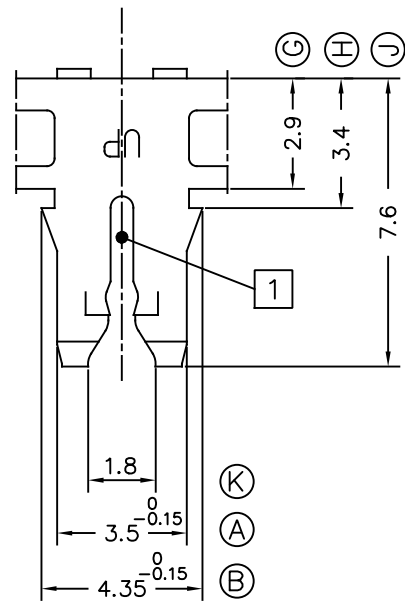
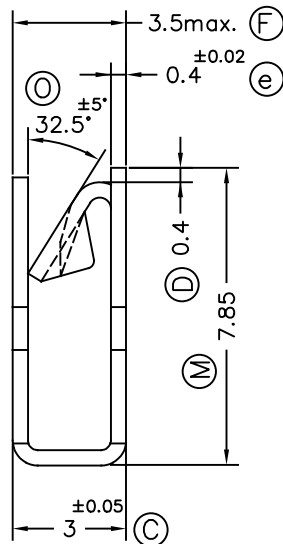
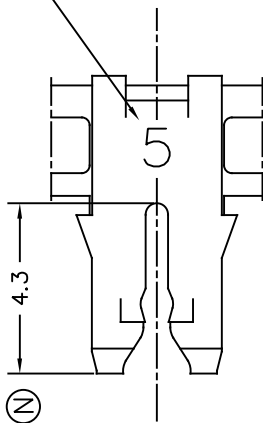


E: 5/1

Delivery Form



Number "5" identifies the magnet wire range



Notes:

[1] Copper wires: Slot allows insertion of single magnet wire.
Aluminium wires: Slot may accept single aluminium magnet wires. Consult Escubedo for the wire range.

[2] Allows connection of UP-MATE tabs, as well as rigid or multi-stranded wires

6905.02	Tinplated	CuZn30*	0.38-0.50 mm	- mm	²					01	Dimension N	09/07/20
References	Finish	Material	∅Copper Magnet wire [1]	Cable Sq.section [2]	A	B	C	D	Rev.	Description	Date	
										00	1st. Edition	20/07/18

<p>ESCUBEDO Especialitats Elèctriques Escubedo S.A.</p>			<p>FEMALE UP-MATE</p>					
DWN	VR	20/07/18					SIZE	A4v
CHK	XM	20/07/18	MATERIAL STANDARDS	DIMENSIONAL STANDARDS	GENERAL TOLERANCES		DRW NAME	PT6905 "c"
SCALE	5/1		EN 1654*	Specials	±0.2 ±2°		REF.	6905.xx