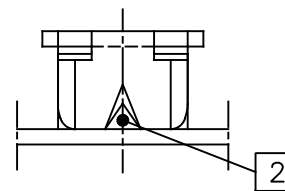
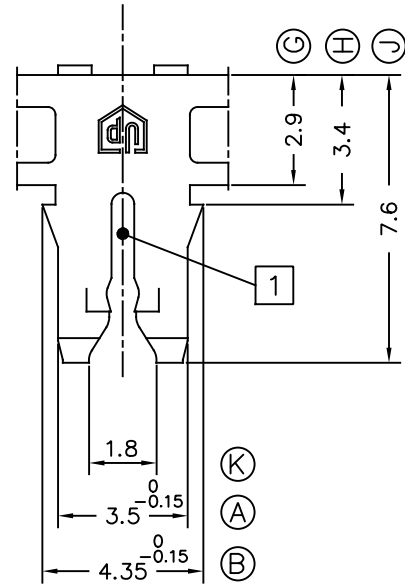
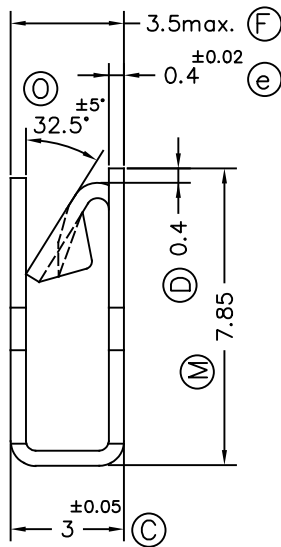
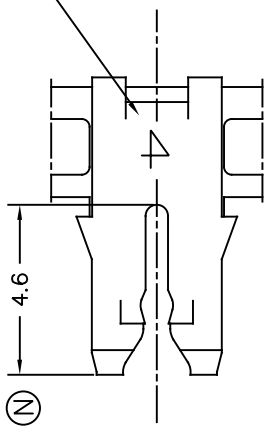


Number "4" identifies the magnet wire range



Notes:

[1] Copper wires: Slot allows insertion of single magnet wire.
Aluminium wires: Slot may accept single aluminium magnet wires. Consult Escubedo for the wire range.

[2] Allows connection of UP-MATE tabs, as well as rigid or multi-stranded wires

03	Inf. updated	02/08/18
02	Updated & Al. wire	13/03/17
01	Dimens. Rev.	01/07/09

6904.02	Tinplated	CuZn30*	0.8-1.2 mm	0.5-0.9 mm ²					00	1st. Edition	16/07/08
References	Finish	Material	∅Copper Magnet wire [1]	Cable Sq.section [2]	A	B	C	D	Rev.	Description	Date



FEMALE UP-MATE



DWN	JCS	16/07/08				SIZE	A4v
CHK	FAT	16/07/08	MATERIAL STANDARDS	DIMENSIONAL STANDARDS	GENERAL TOLERANCES	DRW NAME	PT6904 "c"
SCALE	5/1		EN 1654*	Specials	±0.2 ±2°	REF.	6904.xx