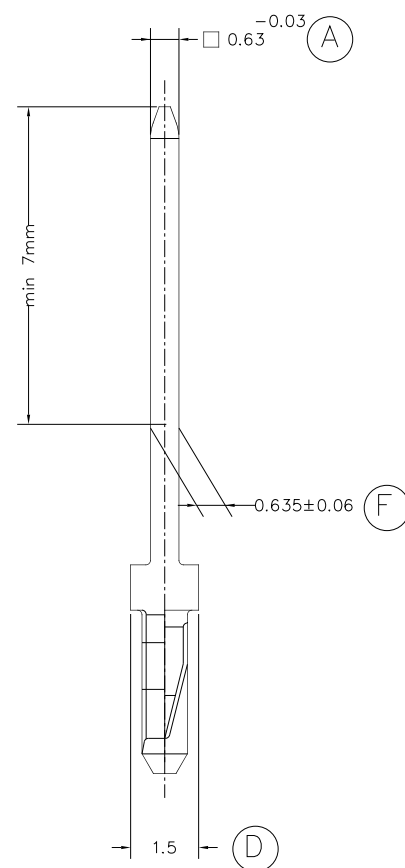
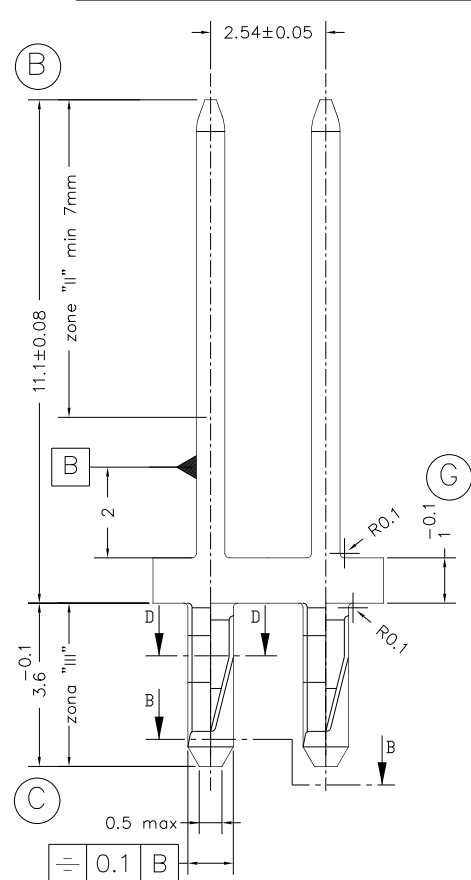
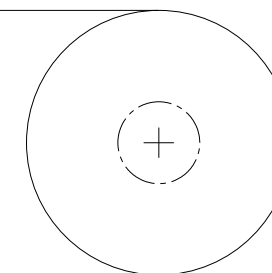
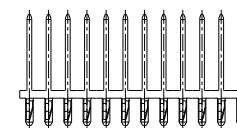


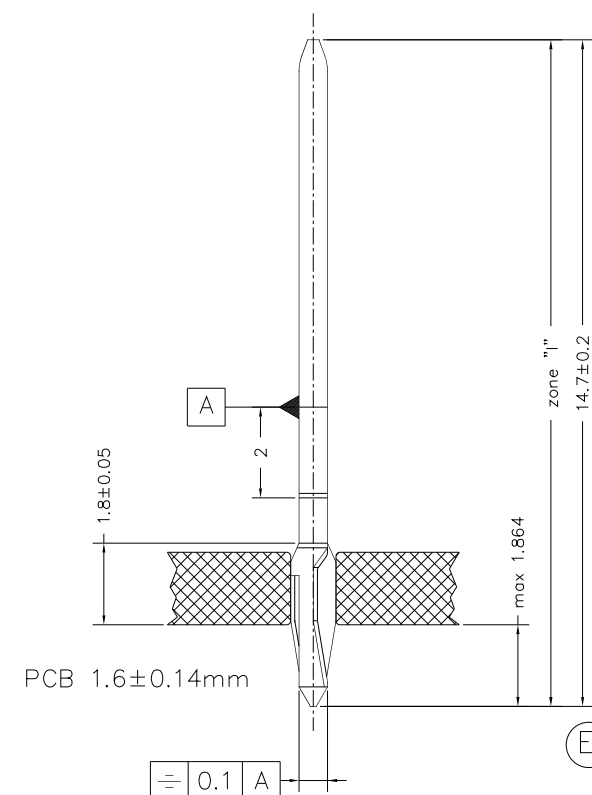
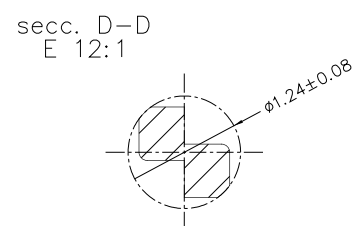
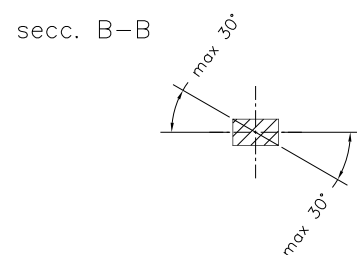
Paso de matriz
Tolerancia para 30 PINS ±0.2mm
Pitch dimension
Tolerances per 30 PINS ±0.2mm



FORMA DE SUMINISTRO
DELIVERY FORM



E 1:1



6800.52	CuNiSi R580	ZONA III Sn 0.8 a/to 1.8µm sobre/over Ni								
		ZONA II Sn 1.0 a/to 3.0µm sobre/over Ni								
		ZONA I Ni 1.3 a/to 2.2µm total/all over								
Ref-P/N	Material	Acabado Selectivo/Selective Surface	A	B	C	D	Rev.	Modification	Date	00 1° Edition 24/09/13



PRESS-FIT PIN para agujero ø1mm
PRESS-FIT PIN for ø1mm hole



DRW	FAT	24/09/14						FORMAT	A3h
APV	JCS	24/09/14	MATERIAL SPECIFICATIONS EN 1654*	DIMENSIONAL SPECIFICATIONS Especiales	GENERAL TOLERANCES See table			NAME	PT6800 "C"
SCLALE	6/1							REF.	PT6800.XX

TOLERANCIAS GENERALES				
Dim. lineales y diametrales	< 3 ±0.125	> 3 A 6 ±0.15	>6 A 10 ±0.18	>10 A 18 ±0.215
			>18 A 30 ±0.26	

Dimensiones angulares ± 2'			TOLERANCIAS DE FORMA Y POSICION [mm]			
Planitud	∇ 0.1		Simetria	≡ 0.1	Forma	∩ 0.2
Perpend.	⊥ 0.2		Concent.	◎ 0.2	Rectitud	— 0.2