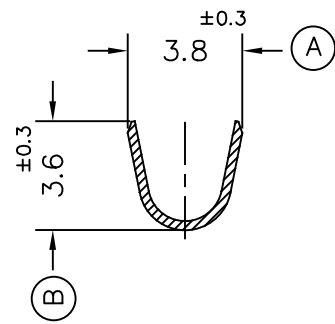
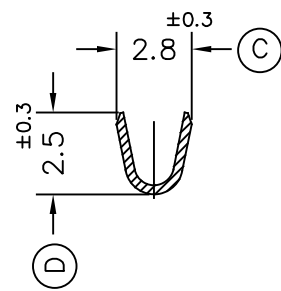


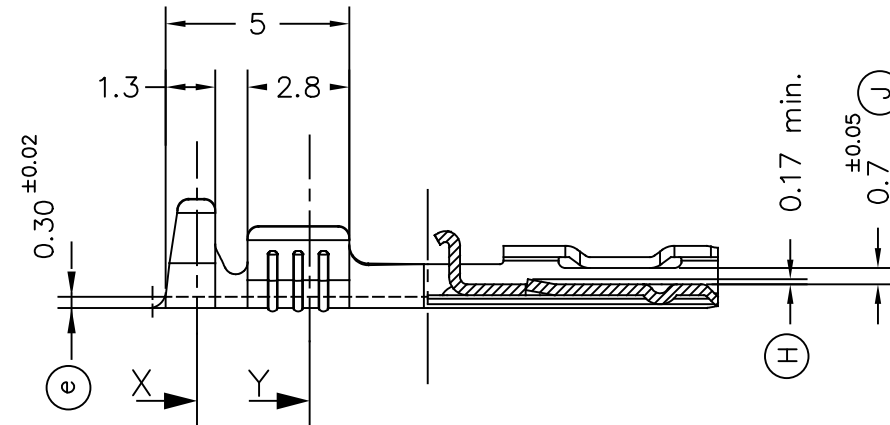
Secc.X



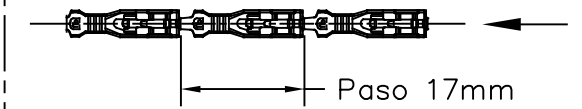
Secc.Y



Secc.Z-Z



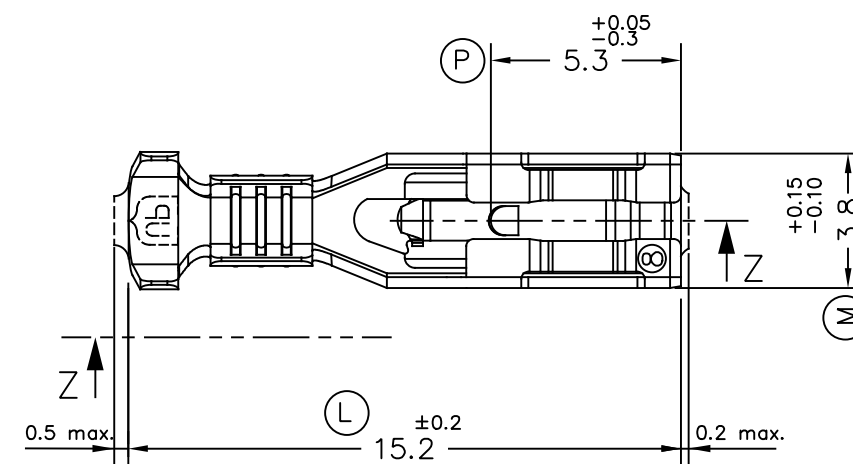
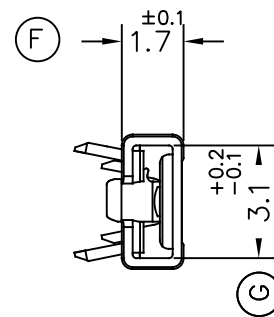
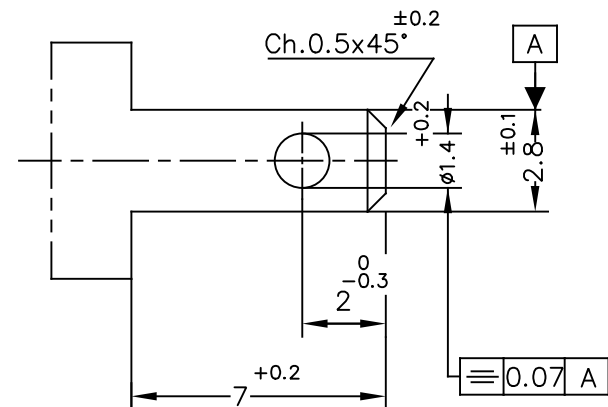
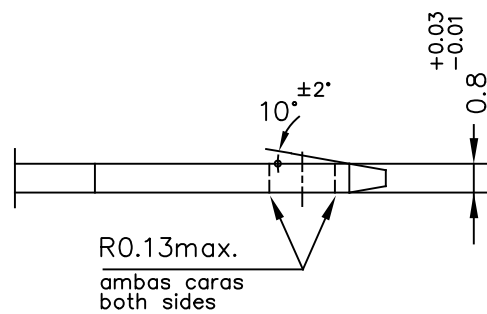
FORMA DE SUMINISTRO



E 1/1

MACHO DE CONEXIÓN SUGERIDO/SUGGESTED MALE

- Material CuZn o Fe-Pre Ni
- Sin rebabas en el agujero/No burrs at hole
- Planitud dentro de 0.03mm en toda su longitud/Flatness within 0.03mm over the whole length
- Agujero simétrico sobre el eje del macho/ Hole be symmetrical about tab acc. drawing specification



						07	Typo error (DY)	11/04/23
						06	Modifica. cota H (OR)	23/07/21
						05	Actualizar cajón (DY)	30/04/21
						04	Cota H	28/08/19
						03	Suggested male	31/07/18
						02	Mdf.cotas	15/05/18
						01	Act. dim.	01/02/18
						00	1ª Edición	28/10/15
Referencias	Acabados	Material	Sección Conductor	Ø Aislante	Para Macho	Rev.	Modificación	Fecha
4907.24	Pre-Ni	Acero	0.5±1.0mm ²	1.8±2.5mm.	2.8x0.8			
4907.01	Pre-Sn	Latón*						
4907.00	Natural	CuZn30						
<p>ESPECIALIDADES ELÉCTRICAS ESCUBEDO S.A.</p>			<p>TERMINAL HEMBRA Serie 2.8 UP-TPSEK3</p>					
DIBUJADO	JCS	28/10/15				FORMATO	A3h	
CONTROL	FAT	28/10/15	NORMAS MATERIALES EN 1654 *	NORMAS DIMENSIONALES Especiales	TOLERANCIAS GENERALES ±0.2 ±2°	NOMBRE	PT4907 "c"	
ESCALA	5/1					REF.	4907.xx	