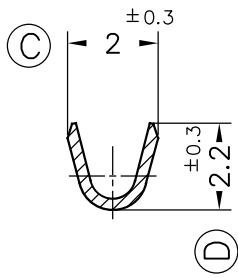
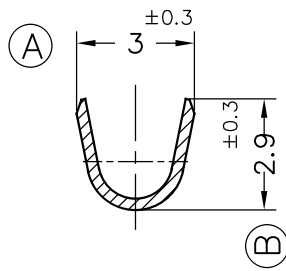


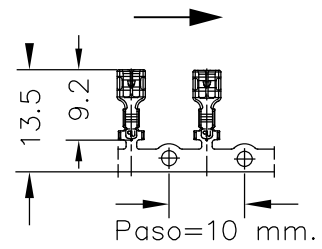
Secc. Z-Z'



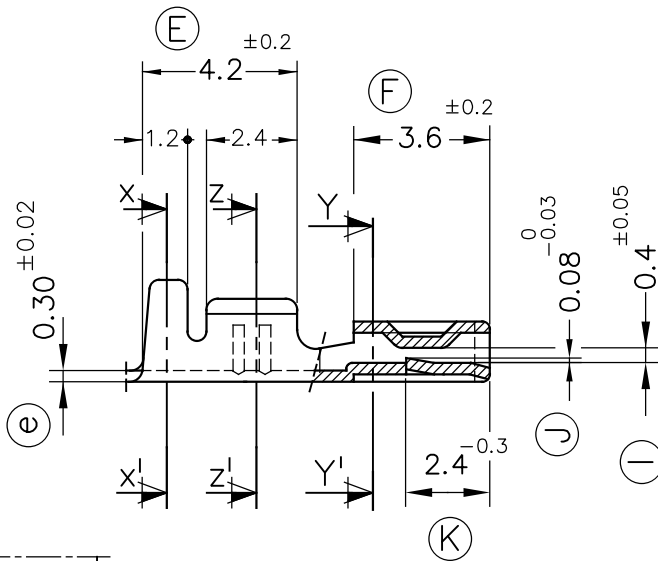
Secc. X-X'



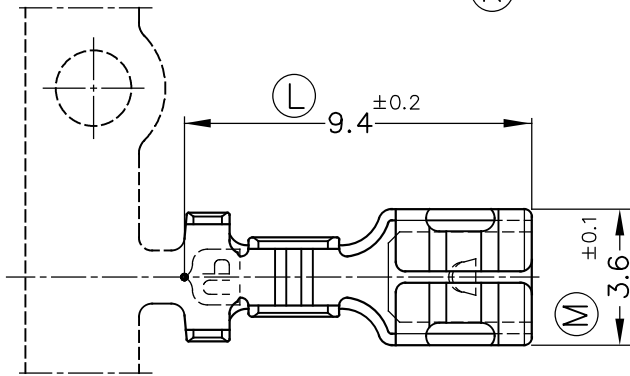
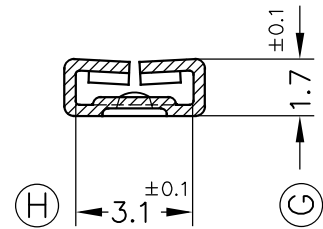
FORMA DE SUMINISTRO



E: 1/1



Secc. Y-Y'



4901.31	Pre-Estañado	Bronce*	0.2÷0.5 mm. <sup>2</sup>	1.8 mm.max.	2.8x0.5																
4901.30	Natural	CuSn6																			
4901.01	Pre-Estañado	Latón*	0.2÷0.5 mm. <sup>2</sup>	1.8 mm.max.	2.8x0.5																
4901.00	Natural	CuZn30																			
Referencias	Acabados	Material	Sección Conductor	∅ Aislante	Para Macho	A	B	C	D	Rev.	Modificación	Fecha									



TERMINAL HEMBRA TP Serie 2.8



DIBUJADO	JCS	23/05/07	NORMAS MATERIALES EN 1654*	NORMAS DIMENSIONALES Especiales	TOLERANCIAS GENERALES ±0.2 ±2°	FORMATO	A4v
CONTROL	FAT	23/05/07				NOMBRE	PT4901 "c"
ESCALA	5/1		REF.		4901.xx		