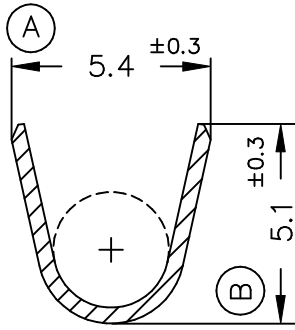
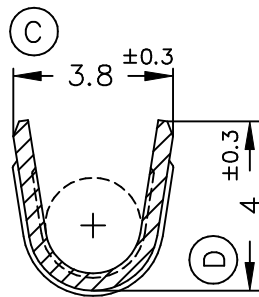


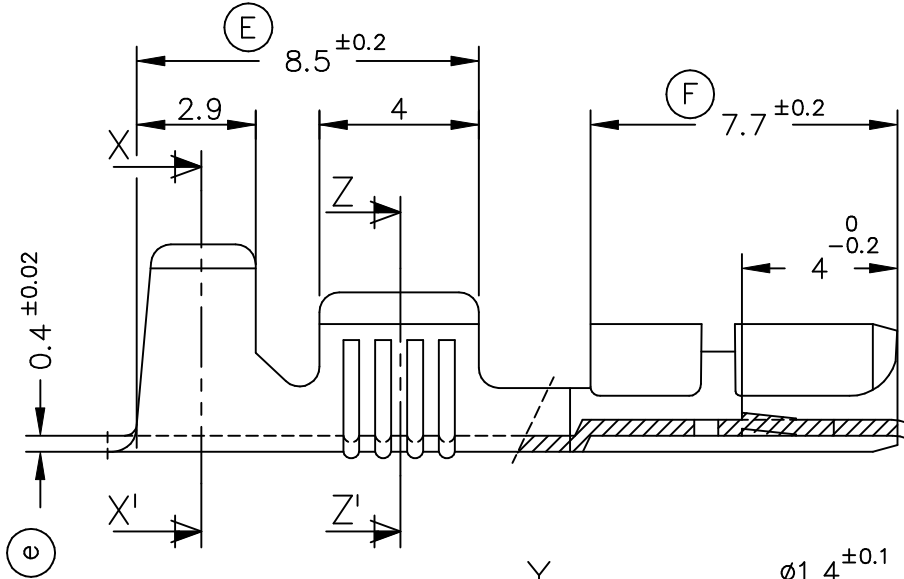
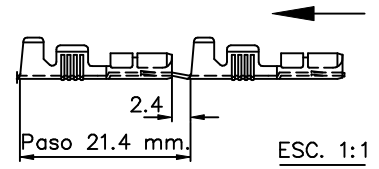
Secc. X-X'



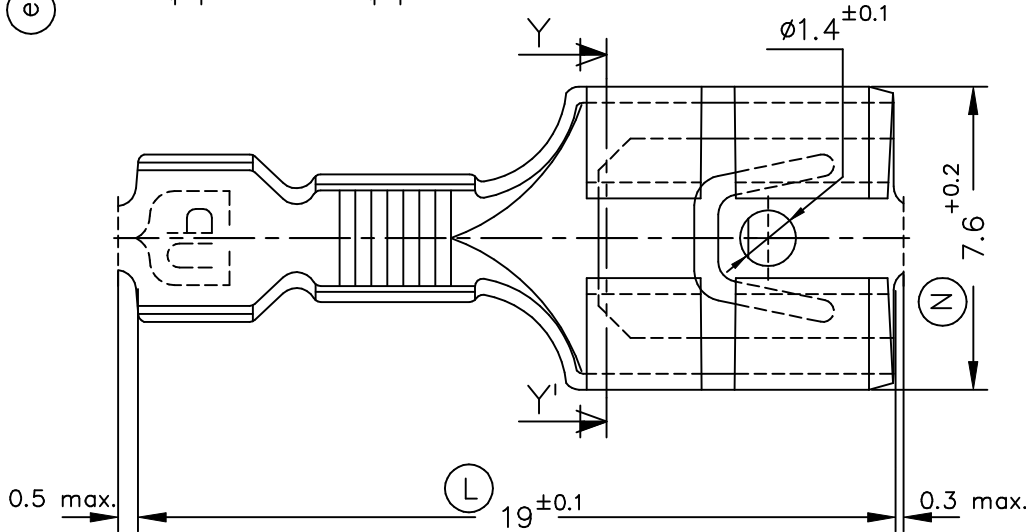
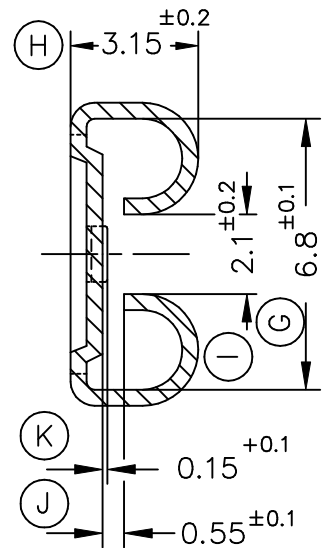
Secc. Z-Z'



FORMA DE SUMINISTRO



Secc. Y-Y'



4822.70	Natural	Alpaca CuNi18Zn20	1 ÷ 2.5mm ²	3 ÷ 4.3mm.	6.3x0.8	A	B	C	D	Rev.	02	Modif. cota ①	26/05/03
4822.32	Estañado	Bronce									01	Añadir ref.4822.70	13/01/99
4822.30	Natural	CuSn6									00	1ª Edición	10/10/94
4822.02	Estañado	Latón											
4822.00	Natural	CuZn30											
Referencias	Acabados	Material	Sección Conductor	∅ Aislante	Para Macho	A	B	C	D	Rev.	Modificación	Fecha	



TERMINAL HEMBRA Serie 6.3
Especial TBI



DIBUJADO	Gemma	10/10/94	NORMAS MATERIALES EN1654	NORMAS DIMENSIONALES Especiales	TOLERANCIAS GENERALES ±0.2 ±2°	FORMATO	A4v
CONTROL	F.Adamuz	10/10/94				NOMBRE	PT4822 "c"
ESCALA	5/1		REF.	4822.xx			