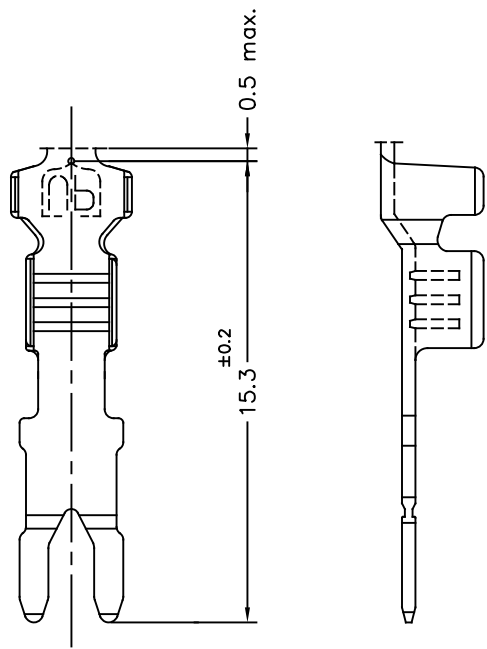


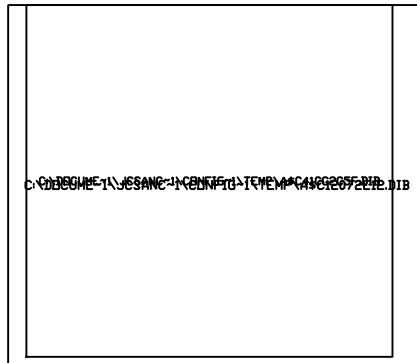
TERMINAL RECTO / STRAIGHT TERMINAL



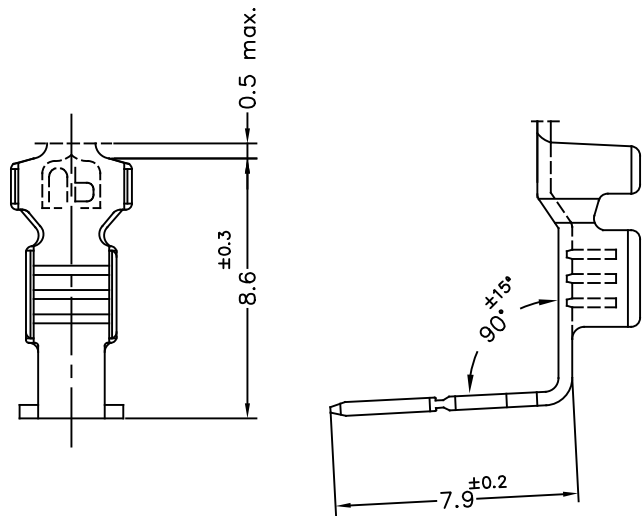
ENGASTADO POR MINIAPLICADOR:  
CRIMPED BY MINIAPPLICATOR:  
MN3874 DW

QUITAR PARTES  
DE DOBLADO  
(ver lista componentes)

TAKE OUT  
BENDING PARTS  
(see part list)

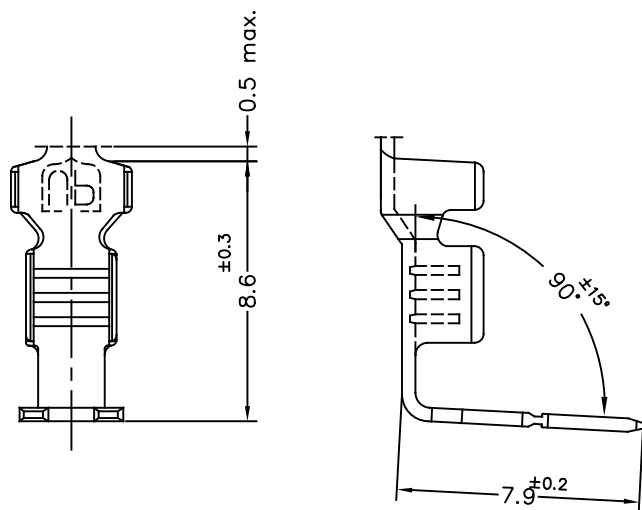


TERMINAL 90° ABAJO / 90° DOWN TERMINAL

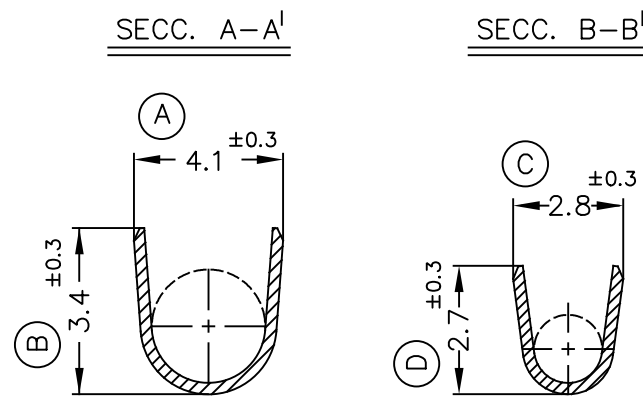


ENGASTADO Y DOBLADO POR MINIAPLICADOR:  
CRIMPED AND BENDED BY MINIAPPLICATOR:  
MN3874 DW

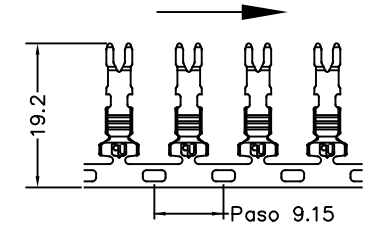
TERMINAL 90° ARRIBA / 90° UP TERMINAL



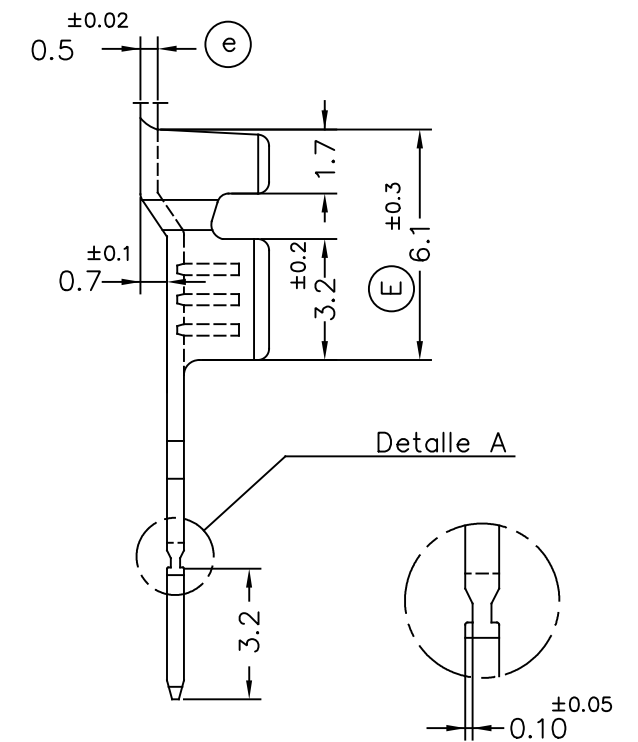
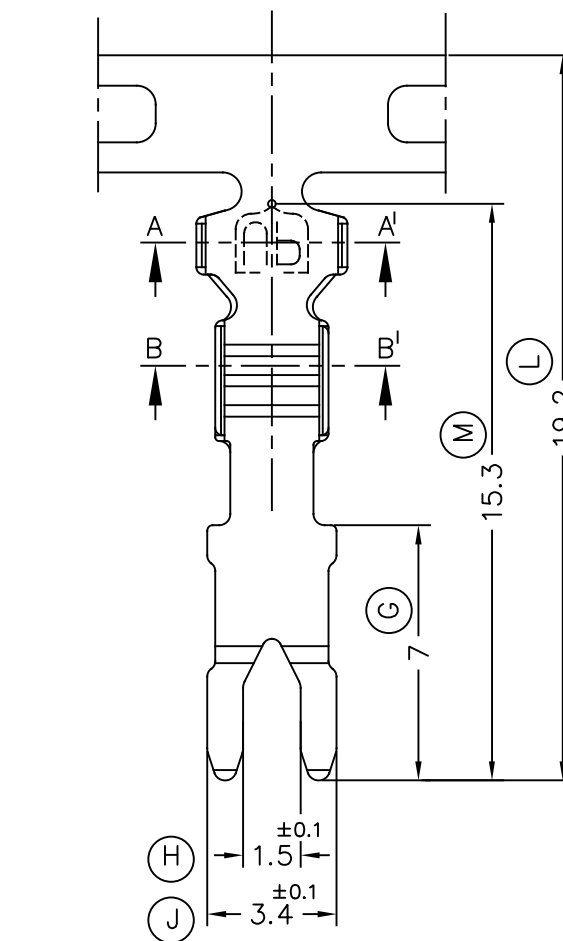
ENGASTADO Y DOBLADO POR MINIAPLICADOR:  
CRIMPED AND BENDED BY MINIAPPLICATOR:  
MN3874 UP



FORMA DE SUMINISTRO  
DELIVERY FORM



E 1:1



Detalle A

E 10/1

3874.02	Post-Sn	Latón* CuZn30	0.3±0.9mm <sup>2</sup>	1.5±2.5mm.													03	actualizar rango (DY)	15/12/22		
3874.01	Pre-Sn																		02	actualizar rango Cu (DY)	12/09/22
3874.00	Natural																		01	Cambio ref miniaplicador	08/06/10
Referencias		Acabados	Material	Sección Conductor	Ø Aislante	A	B	C	D	Rev.	Modificación	Fecha					00	1a. Edición	08/04/09		
DIBUJADO		JCS	08/04/09	TERMINAL HORQUILLA UP-MAG				Terminales UP Electricos				FORMATO	A3H								
CONTROL		FAT	08/04/09	NORMAS MATERIALES EN1654*	NORMAS DIMENSIONALES Especiales	TOLERANCIAS GENERALES ±0.2 ±2°			NOMBRE PT3874 "C"												
ESCALA		5/1										REF. 3874.xx									