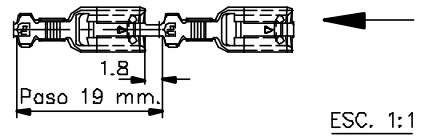
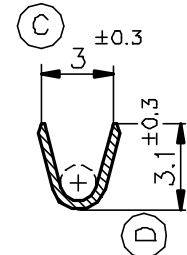


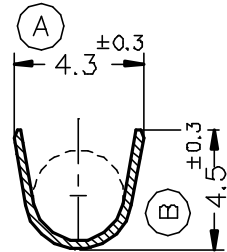
FORMA DE SUMINISTRO



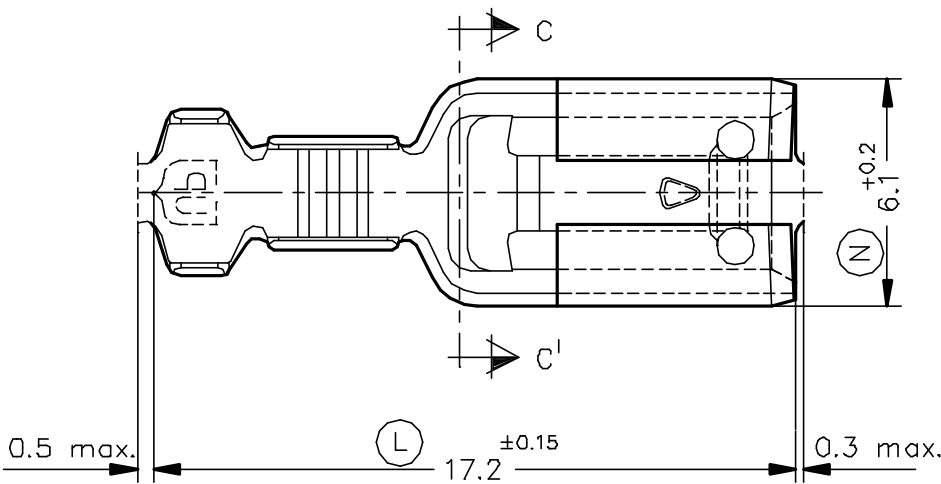
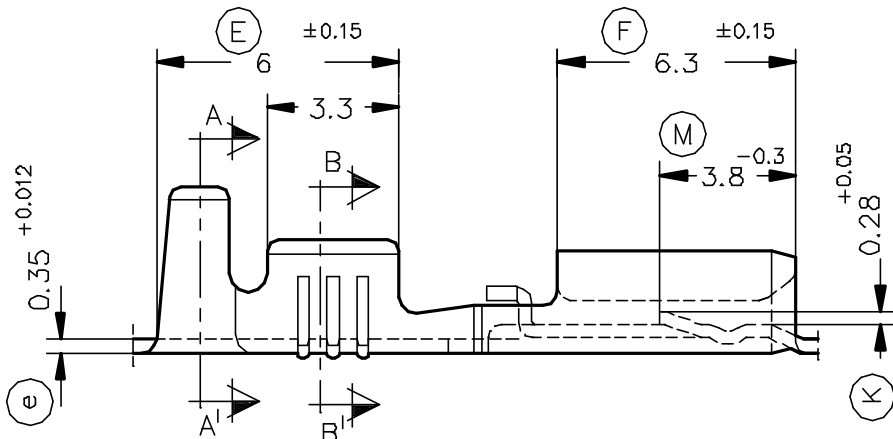
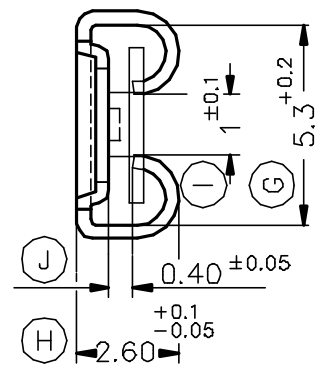
SECC. B-B'



SECC. A-A'



SECC. C-C'



4766.02	Estañado	Latón	0.5÷1.25mm <sup>2</sup>	1.8÷4.1mm.	5.2x0.5													
4766.00	Natural	CuZn30												00	1ª Edición	28/08/96		
Referencias	Acabados	Material	Sección Conductor	φ Aislante	Para Macho	A	B	C	D	Rev.	Modificación	Fecha						
		TERMINAL HEMBRA Serie 5.2 –SEGURIDAD–										Terminales						
DIBUJADO	Gemma	28/08/96	NORMAS MATERIALES		NORMAS DIMENSIONALES		TOLERANCIAS GENERALES		FORMATO		A4v							
CONTROL	F.Adamuz	28/08/96	DIN17670		Especiales		±0.2 ±2°		NOMBRE		PT4766 "c"							
ESCALA	5/1												REF. 4766.xx					