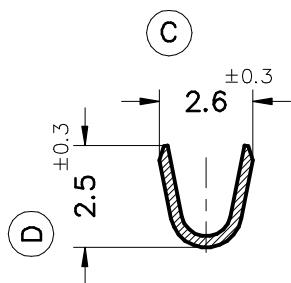
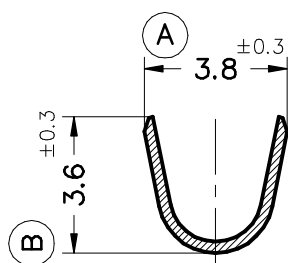


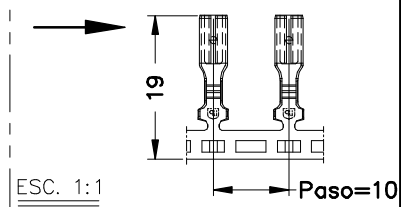
Secc. Z-Z'



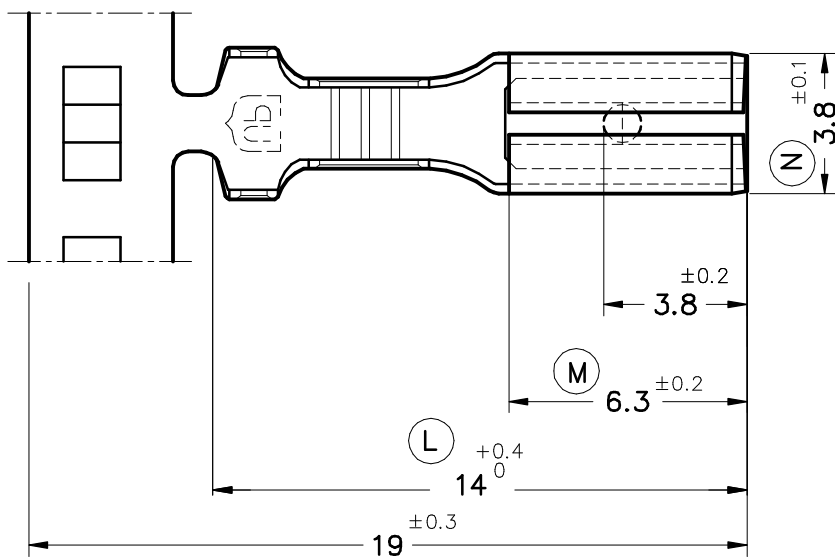
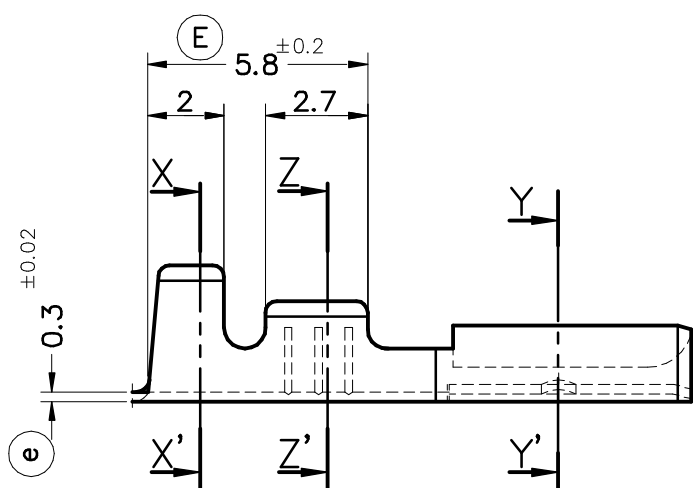
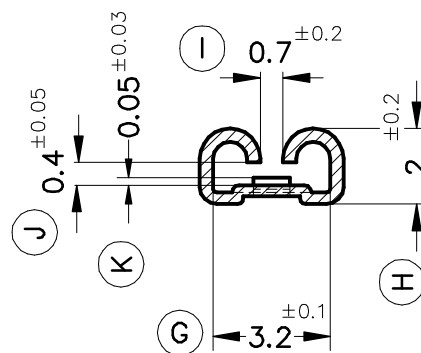
Secc. X-X'



FORMA DE SUMINISTRO



Secc. Y-Y'



4607D31	Pre-estañado	Bronce*	0.5 ÷ 1mm <sup>2</sup>	1.8 ÷ 2.5mm.	2.8x0.5							00	1ª Edición	14/07/05
4607D30	Natural	CuSn6												
4607D01	Pre-estañado	Latón*	0.5 ÷ 1mm <sup>2</sup>	1.8 ÷ 2.5mm.	2.8x0.5									
4607D00	Natural	CuZn30												
Referencias	Acabados	Material	Sección Conductor	∅ Aislante	Para Macho	A	B	C	D	Rev.	Modificación	Fecha		



TERMINAL HEMBRA Serie 2.8



DIBUJADO	V. Roura	12/05/05
CONTROL	F.Adamuz	12/05/05
ESCALA	5/1	

NORMAS MATERIALES  
EN 1654\*

NORMAS DIMENSIONALES  
Din 46247

TOLERANCIAS GENERALES  
±0.2 ±2°

FORMATO	A4v
NOMBRE	PT4607D "c"
REF.	4607Dxx