

## 4802.\*\*

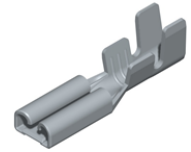
### 2,8 MM (.110) UP-TBI LOW INSERTION TERMINALS - BASED ON STANDARD DESIGN



**Description** End feed Receptacles low insertion for tab 2,8 x 0,5 (Rear dimple)

**Wire section range** 0,1 – 0,3 mm<sup>2</sup> (AWG 26 – 22)

**Max. Insulator Ø** 1.8 mm



**Materials, Temperature**

Part nr.	Material	Finishing	Max. Temp. (C°)
4802.00	Brass	Natural	110
4802.02	Brass	Tin plated	120
4802.30	Bronze	Natural	120
4802.32	Bronze	Tin plated	130
4802.70	German silver	Natural	170

**Note:** Max. recommended temperature

**Material thickness** 0,25 mm

**Max. Rated current**

**Maximum Current values.**

Values of the table show the recommended maximum current values, limited by the cross section of the cable used. These maximum values also depend on the ambient temperature, and can be reduced depending on the working conditions. For more precise information about the maximum rating current applicable in each case, consult the "Temperature Rise" and "De-rating" curves.

Wire section (mm <sup>2</sup> )	Current (A)
0,1	(T.B.D.) <sup>1</sup>
0,2	(T.B.D.) <sup>1</sup>
0,3	(T.B.D.) <sup>1</sup>

**Insertion/Withdrawal forces**

1 <sup>st</sup> . Insertion	20 N Max
1 <sup>st</sup> . Withdrawal	30 N Max
10 <sup>th</sup> Withdrawal	5 N Min

**Application tool** MN4400

**Wire stripping length** 3.8 (±0.5) mm

**Crimping parameters &**

**Pull out force**

Wire section (mm <sup>2</sup> ±10%)		Conductor (mm)		Insulator (mm)	Pull-out force (N)	
Nominal	Actual	Height (±0,05)	Width (measured)	Width (measured)	DIN64249	ESCUBEDO
0.1	0.11	0.82	1.53	1.64	-	>20
0.2	0.22	0.85	1.54	1.64	≥ 20	>30
0.3	0.31	0.90	1.55	1.65	≥ 40	>50

**Note:** Values only valid for the application tool specified upwards. The insulator widths are only indicative as they are dependent on the sheath thickness of the wire used.

**Packaging**

15000 Pieces on 300 mm Ø x 160 mm. wide cardboard reel, 16.5 mm terminal chain pitch

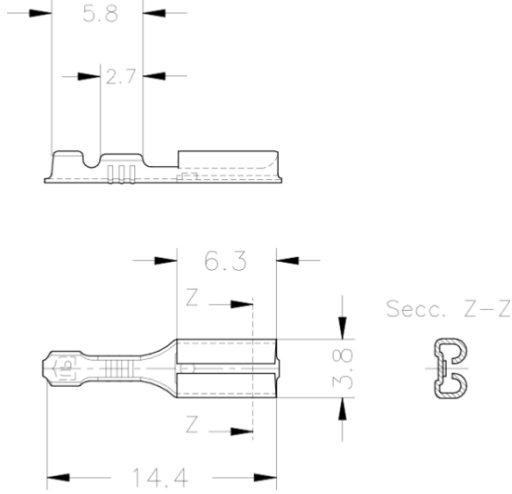
<sup>1</sup> (T.B.D.)-To be determined

**4802.\*\***

**2,8 MM (.110) UP-TBI LOW INSERTION TERMINALS - BASED ON STANDARD DESIGN**



**Drawing**



**Approvals**

- RoHS Compliant



**Connectors Compatibility**

Part Number	Nº of Ways	Color	Polietilene	PA66 V2	PA66 V0	PA66 NF	
2282000	1	Natural	x				
2282010				x		x	
2282040							
2281010					x		
2281030							x
2281040							x
2281110					x		
2281130							x
2281140							x
2281210					x		
2281230							x
2281240							x

**Note:** For others materials and colours consult the specific datasheet

**Disclaimer**

Data obtained from Escubedo Laboratory essays, using own methodology, cablings, equipment and original crimping tools, done in laboratory conditions and following the indicated standards, errors and omissions excepted. This document has no contractual meaning and it is publicised only for informative purposes. It can be changed without prior notice. The end customer has the sole responsibility to check these characteristics in its environment and with its own components, manufacturing methods and equipment. See also the full range product overview if available. For further information please visit our web site or contact us.

Rev. Nr.	Concept	Date	Created/Revised	Approved
1	Creation	26/08/2015	D.Martinez / E.Roura	D.Martinez