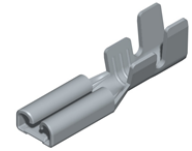


## 4107.\*\*



### 2.8 MM (.110) UP-STA RECEPTACLES FOR CONNECTOR FOR TAB 2.8X0.5



**Description** Standard receptacles for connector for 2.8x0.5 Tabs. Side feed receptacles

**Dimensional Standard** DIN 46340

**Wire section range** 0.50– 1.00 mm<sup>2</sup> (AWG 20 - 18)

**Max. Insulator Ø** 2.5 mm.

**Materials, Temperature & Contact resistance**

| Part nr. | Material | Finishing      | Max. temp. (C°) |
|----------|----------|----------------|-----------------|
| 4107.00  | Brass    | Natural        | 110             |
| 4107.01  | Brass    | Pre-tin plated | 120             |
| 4107.30  | Bronze   | Natural        | 120             |
| 4107.31  | Bronze   | Pre-tin plated | 130             |

**Notes:** Temperatures as per IEC 61210 standard.

**Material thickness** 0,3 mm

**Max. Rated current**

**Maximum Current values.**

Values of the table show the recommended maximum current values, limited by the cross section of the cable used. These maximum values also depend on the ambient temperature, and can be reduced depending on the working conditions. For more precise information about the maximum rating current applicable in each case, consult the "Temperature Rise" and "De-rating" curves.

| Wire section (mm <sup>2</sup> ) | Current (A) |
|---------------------------------|-------------|
| 0.50                            | 6           |
| 0.75                            | 8           |
| 1.00                            | 8           |

**Insertion/Withdrawal forces**

|                  | Natural   |
|------------------|-----------|
| 1st. Insertion   | 25 N Max. |
| 1st. Withdrawal  | 30 N Max. |
| 10th. Withdrawal | 5 N Min.  |

**Application tool** MN4107

**Wire striping length** 3.5 (±0.5) mm

**Crimping parameters & Pull out force**

| Wire section (mm <sup>2</sup> ±10%) |        | Conductor (±0,05) |             | Insulator (±0,15) | Pull-out force (N) |          |
|-------------------------------------|--------|-------------------|-------------|-------------------|--------------------|----------|
| Nominal                             | Actual | Height (mm.)      | Width (mm.) | Width (mm.)       | DIN64249           | ESCUBEDO |
| 0.50                                | 0.45   | 1.15              | 2.02        | 3.11              | ≥ 60               | >70      |
| 0.75                                | 0.71   | 1.25              | 2.04        | 3.13              | ≥ 70               | >80      |
| 1.00                                | 0.93   | 1.35              | 2.05        | 3.15              | ≥ 80               | >90      |

**Note:** Values only valid for the application tool specified upwards. The insulator widths are only indicative as they are dependent on the sheath thickness of the wire used.

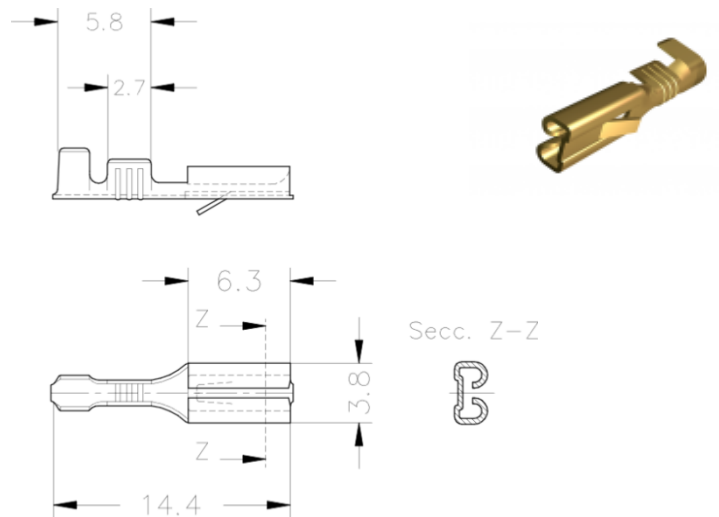
**Packaging** 7000 Pieces on 200 mm. cardboard reel, 10 mm terminal chain pitch

**4107.\*\***



**2.8 MM (.110) UP-STA RECEPTACLES FOR CONNECTOR FOR TAB 2.8X0.5**

**Drawing**



**Approvals**

- RoHS Compliant



**Connectors Compatibility**

| Part Number | Color   | Way | Nylon | Nylon V0 | PA66 NF |
|-------------|---------|-----|-------|----------|---------|
| 2285010     | Natural | 1   | X     |          |         |
| 2285030     | Natural |     |       | X        |         |
| 2285040     | Natural |     |       |          | X       |
| 2285210     | Natural | 2   | X     |          |         |
| 2284310     | Natural | 3   | X     |          |         |
| 2284330     | Natural |     |       | X        |         |
| 2284340     | Natural |     |       |          | X       |
| 2287310     | Natural | 5   | X     |          |         |

**Note:** For others materials and colours consult the specific datasheet

**Disclaimer**

Data obtained from Escubedo Laboratory essays, using own methodology, cablings, equipment and original crimping tools, done in laboratory conditions and following the indicated standards, errors and omissions excepted. This document has no contractual meaning and it is publiscid only for informative purposes. It can be changed without prior notice. The end customer has the sole responsibility to check these characteristics in its environment and with its own components, manufacturing methods and equipment. See also the full range product overview if available. For further information please visit our web site or contact us.

| Rev. Nr. | Modification    | Date       | Created/Revised      | Approved   |
|----------|-----------------|------------|----------------------|------------|
| 1        | Creation/Update | 02/04/2015 | D.Martinez / E.Roura | JC Sanchez |