



**8545.\*\***  
**UP-FIT SERIES - 4.20 MM UP-FIT CONNECTIONS**



**Specification** 4.20 mm UP-FIT Female Terminals

**Wire size mm<sup>2</sup> (AWG)** 0,08-0,32 (22-28)

**Ø Insulation (mm)** 1-1,8

**Counterpart** 7545.\*\*; 7546.\*\*; 7547.\*\*

**Materials, temperature and contact resistance**

Part nr.	Material	Finishing	Max. Temp. (°C)
8545.01	Brass	Pre-tin-plated	120
8545.31	Bronze	Pre-tin-plated	130

**Material thickness (mm)** 0,2



**Insertion / Withdrawal forces**

	8545.01 / 31
1st Insertion (max)	5N <sup>1</sup>
1st Withdrawal (min)	1N <sup>1</sup>

<sup>1</sup> Valid for UP-FIT Series

**Application tool** MN7545

**Crimping parameters & pull out force**

Wire section (±10%)	Conductor 		Insulator 	Pull-out force (N)
	Height (mm)	Width (mm)	Width (mm)	
22 AWG	0.84	1.26	1.65	36N @ 60s
24 AWG	0.80	1.25	1.65	22,3N @ 60s
26 AWG	0.75	1.26	1.65	13,4N @ 60s
28 AWG	0.70	1.23	1.65	≥ 12N

Values only valid for the application tool specified upwards. The insulator widths are only indicative as they are dependent on the sheath thickness of the wire used.

**Winding number** 9000

**Compatible connectors** 242M12\*\*, 242M22\*\*, 242M23\*\*, 242M24\*\*, 242M25\*\*, 242M26\*\*, 242M28\*\*

**Approved regulations**

Part nr.	Approval	Standard	File	Certified framework
8545.01 <sup>1</sup>	UL	UL 1977	E223221	AWG 28-22 / MN8545 - MN7545
8545.31 <sup>1</sup>	UL	UL 1977	E223221	AWG 28-22 / MN8545 - MN7545

<sup>1</sup> Cat. No. meets with the standard UL1977 as a component of UP-FIT full connection system.

- Rated current and voltage:  
 2 and 4 poles - AWG 28 - 2A/600V (USR, CND)  
 2 and 4 poles - AWG 26 - 3A/600V (USR, CND)  
 2 and 4 poles - AWG 24 - 3A/600V (USR, CND)  
 2 and 4 poles - AWG 22 - 4A/600V (USR, CND)  
 6 poles - AWG 28 - 2A/600V (USR, CND)  
 6 poles - AWG 26 - 2A/600V (USR, CND)  
 6 poles - AWG 24 - 3A/600V (USR, CND)  
 6 poles - AWG 22 - 3A/600V (USR, CND)  
 8, 10, 12 and 16 poles - AWG 28 - 1A/600V (USR, CND)  
 8, 10, 12 and 16 poles - AWG 26 - 1A/600V (USR, CND)  
 8, 10, 12 and 16 poles - AWG 24 - 2A/600V (USR, CND)  
 8, 10, 12 and 16 poles - AWG 22 - 3A/600V (USR, CND)

**Approvals**



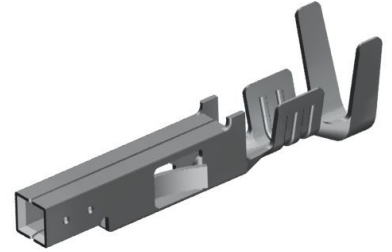
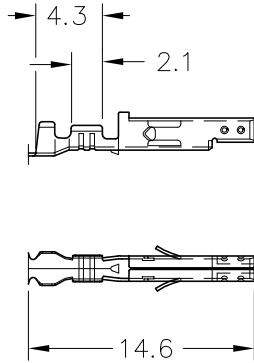


**8545.\*\***

**UP-FIT SERIES · 4.20 MM UP-FIT CONNECTIONS**



Drawing



**Disclaimer**

Data obtained from Escubedo Laboratory essays, using own methodology, cablings, equipment and original crimping tools, done in laboratory conditions and following the indicated standards, errors and omissions excepted. This document has no contractual meaning and it is publised only for informative purposes. It can be changed without prior notice. The end customer has the sole responsibility to check these characteristics in its environment and with its own components, manufacturing methods and equipment. See also the full range product overview if available. For further information please visit our web site or contact us

Rev. Nr.	Concept	Date	Created/Revised	Approved
A2	Update crimping insulation shape	2019-12-03	E.Roura (Laboratory Dept.)	M.Codina (Engineering Dept.)
A1	Datasheet generated automatically [A1]	2018-08-03	Laboratory Dept.	E. Roura