

6905.** UP-MATE SERIES · RECEPTACLES

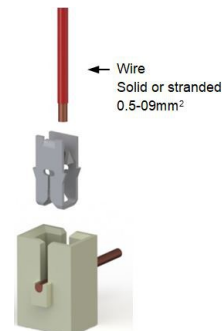
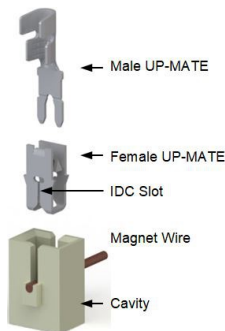
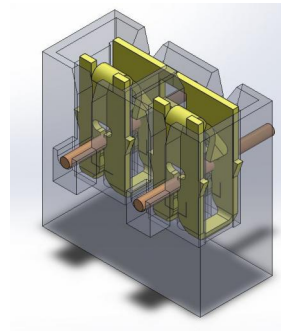
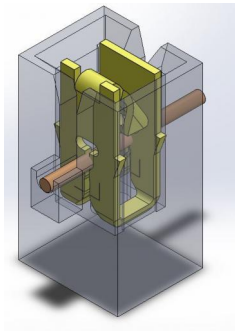


Specification Motor terminals for enameled wire

Description Escubedo offers the UP-MATE family for magnet wire termination for a quick motors and coils connections. The strip form female can be inserted fully automatic into cavity.

During this operation, the magnet wire is inserted into slot, strips the insulation film and finally it remains under a constant pressure against the slot side walls.

This insertion-wiping action between wire and the terminal slot walls removes any oxid or impurities on all contact surfaces producing a clean stable electrical connection.



Magnet wire range Copper wire Ø 0.38-0.50mm² | Aluminium wire (contact with Escubedo: info@escubedo.com)

External Connection Males 3870.xx, 3871.xx, 3873.xx, 3874.xx, 3876.xx, 3878.xx | Wire (0.5-09mm²) solid or stra

Materials, temperature and contact resistance

Part nr.	Material	Finishing	Max. Temp. (°C)
6905.02	Brass	Tin plated	110

Material thickness (mm) 0,4

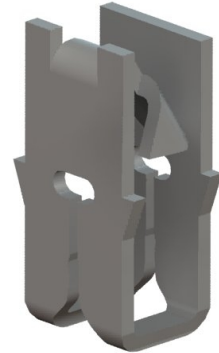
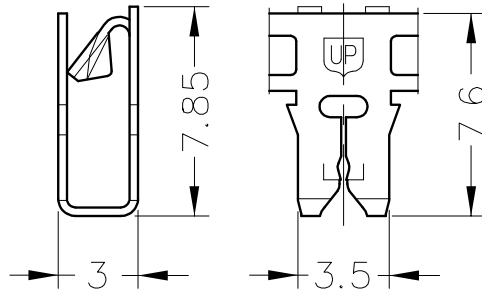
Winding number 14000

Plastic Housing Recommended dimensions for the plastic housing are available.

Approvals



6905.**
UP-MATE SERIES · RECEPTACLES

Drawing

Disclaimer

Data obtained from Escubedo Laboratory essays, using own methodology, cablings, equipment and original crimping tools, done in laboratory conditions and following the indicated standards, errors and omissions excepted. This document has no contractual meaning and it is publiscised only for informative purposes. It can be changed without prior notice. The end customer has the sole responsibility to check these characteristics in its environment and with its own components, manufacturing methods and equipment. See also the full range product overview if available. For further information please visit our web site or contact us

Rev. Nr.	Concept	Date	Created/Revised	Approved
A2	Change company name and logo	2021-10-21	Laboratory Dept.	E. Roura
A1	Datasheet generated automatically [A1]	2018-08-06	Laboratory Dept.	E. Roura

Escubedo Connection Systems, S.A.U. · Ctra. de Girona-Olot Km. 35,5 · 17843 Riudellots de la Creu · Girona · Spain
 Tel.: 34 972 171 706 · Fax: +34 972 171 714 · info@escubedo.com · www.escubedo.com