

6483.** 1.5 (.060) TYPE SERIES · MALES FOR CONNECTOR



Specification Tabs for connector

Tongue thickness (mm) 1,5X0,8

Wire size mm² (AWG) 0,5-1 (20-18)

Ø Insulation (mm) STD

Counterpart 8681.**; 8683.**; 8685.**; 8677.**; 8679.**

Materials, temperature and contact resistance

Part nr.	Material	Finishing	Max. Temp. (°C)
6483.51	Cu. Alloy	Pre-tin-plated	150

Material thickness (mm) 0,3

Max. rated current

Wire section	6483.51
1.00 mm ²	8A

Insertion / Withdrawal forces


	6483.51
1st Insertion (max)	6N ¹
1st Insertion (min)	3N ¹
1st Withdrawal (max)	4N ¹
1st Withdrawal (min)	2N ¹

¹ Valid for 8683.81

Application tool MN6483

Wire strip length 4.7 (±0.5) mm

Crimping parameters & pull out force

Wire section (±10%)	Conductor 		Insulator	Pull-out force (N)
	Height (mm)	Width (mm)		
0.50 mm ²	1.20 (±0,03)	2.05 (±0,03)	2.80 Max.	56N @ 60S
0.75 mm ²	1.30 (±0,05)	2.06 (±0,05)	2.80 Max.	84N @ 60S
1.00 mm ²	1.40 (±0,05)	2.06 (±0,05)	2.80 Max.	108N @ 60S

Values only valid for the application tool specified upwards. The insulator widths are only indicative as they are dependent on the sheath thickness of the wire used.

Winding number 6000

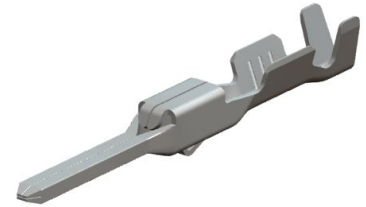
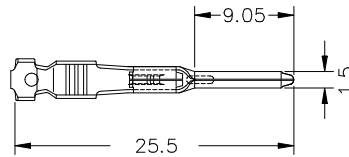
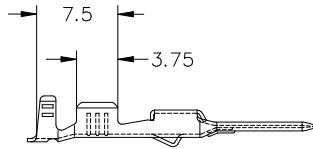
Approvals



6483.**
1.5 (.060) TYPE SERIES · MALES FOR CONNECTOR



Drawing



Disclaimer

Data obtained from Escubedo Laboratory essays, using own methodology, cablings, equipment and original crimping tools, done in laboratory conditions and following the indicated standards, errors and omissions excepted. This document has no contractual meaning and it is publicised only for informative purposes. It can be changed without prior notice. The end customer has the sole responsibility to check these characteristics in its environment and with its own components, manufacturing methods and equipment. See also the full range product overview if available. For further information please visit our web site or contact us

Rev. Nr.	Concept	Date	Created/Revised	Approved
A1	Datasheet generated automatically [A1]	2022-03-18	E. Roura (Laboratory Dept.)	O. Roura (Engineering Dept.)

Escubedo Connection Systems, S.A.U. · Ctra. de Girona-Olot Km. 35,5 · 17843 Riudellots de la Creu · Girona · Spain
Tel.: 34 972 171 706 · Fax: +34 972 171 714 · info@escubedo.com · www.escubedo.com