

4332E**

6.3 (.250) TYPE SERIES · RECEPTACLES FOR CONNECTOR



Specification Standard Terminals

Typology Without dimple

For male (mm) 6,3x0,8

Din Esp

Wire size mm² (AWG) 0,5-1 (20-18)

Ø Insulation (mm) 1,8-3,3

Materials, temperature and contact resistance

Part nr.	Material	Finishing	Max. Temp. (°C)
4332E00	Brass	Natural	110
4332E02	Brass	Tin plated	120
4332E30	Bronze	Natural	120
4332E32	Bronze	Tin plated	130

Material thickness (mm) 0,35

Max. rated current

Wire section	4332E00 / 02 / 30 / 32
0.50 mm ²	8A
0.75 mm ²	10A
1.00 mm ²	12A

Insertion / Withdrawal forces

	4332E00 / 30	4332E02 / 32
1st Insertion (max)	30N ¹	40N ¹
1st Withdrawal (max)	35N ¹	40N ¹
6th Withdrawal (min)	7N ¹	7N ¹

¹ Valid for Natural Brass Tab

Winding number 8000

Compatible connectors 26351**, 26352**, 26353**, 26354**, 26355**, 26356**, 26357**, 26358**, 26374**, 26375**, 26378**, 26380**, 26386**, 26387**, 26390**, 26397**

Approvals

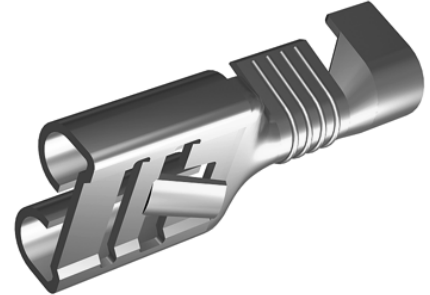
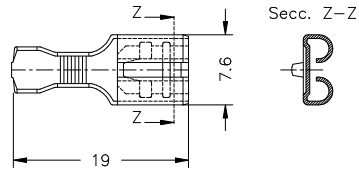
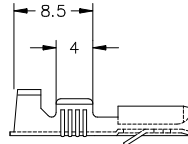


4332E**

6.3 (.250) TYPE SERIES · RECEPTACLES FOR CONNECTOR



Drawing



Disclaimer

Data obtained from Escubedo Laboratory essays, using own methodology, cablings, equipment and original crimping tools, done in laboratory conditions and following the indicated standards, errors and omissions excepted. This document has no contractual meaning and it is publicised only for informative purposes. It can be changed without prior notice. The end customer has the sole responsibility to check these characteristics in its environment and with its own components, manufacturing methods and equipment. See also the full range product overview if available. For further information please visit our web site or contact us

Rev. Nr.	Concept	Date	Created/Revised	Approved
A1	Datasheet generated automatically [A1]	2023-10-16	Laboratory Dept.	E. Turon (Engineering Dept.)

Escubedo Connection Systems, S.A.U. · Ctra. de Girona-Olot Km. 35,5 · 17843 Riudellots de la Creu · Girona · Spain
Tel.: 34 972 171 706 · Fax: +34 972 171 714 · info@escubedo.com · www.escubedo.com