

4318.** 4.8 (.187) TYPE SERIES · RECEPTACLES FOR CONNECTOR



Specification Standard Terminals

For male (mm) 4,8x0,8

Wire size mm² (AWG) 1-2,5 (18-14)

Ø Insulation (mm) 3-4,3

Materials, temperature and contact resistance

Part nr.	Material	Finishing	Max. Temp. (°C)	Contact Resist (mΩ)
4318.00	Brass	Natural	110	0.80
4318.02	Brass	Tin plated	120	0.65
4318.30	Bronze	Natural	120	0.90
4318.32	Bronze	Tin plated	130	0.75

Material thickness (mm) 0,3

Max. rated current

Wire section	4318.00 / 02 / 30 / 32
1.00 mm ²	12A
1.50 mm ²	16A
2.50 mm ²	20A

Insertion / Withdrawal forces


	4318.00 / 02 / 30 / 32
1st Insertion (max)	30N ¹
1st Withdrawal (max)	35N ¹
10th Withdrawal (min)	7N ¹

¹ Valid for Natural Brass Tab

Application tool MN4316

Wire strip length 4.2 (±0.5) mm

Crimping parameters & pull out force

Wire section (±10%)	Conductor 		Insulator	Pull-out force (N)
	Height (mm)	Width (mm)	Width (mm)	
1.00 mm ²	1.40 (±0.05)	2.84 (±0.05)	4.11 (±0.10)	108N @ 60s
1.50 mm ²	1.50 (±0.05)	2.86 (±0.05)	4.12 (±0.10)	150N @ 60s
2.00 mm ²	1.65 (±0.05)	2.87 (±0.05)	4.13 (±0.10)	150N @ 60s
2.50 mm ²	1.75 (±0.05)	2.89 (±0.05)	4.14 (±0.10)	230N @ 60s

Values only valid for the application tool specified upwards. The insulator widths are only indicative as they are dependent on the sheath thickness of the wire used.

Winding number 10000

Compatible connectors 24850**

Approvals

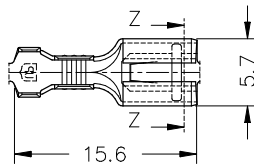
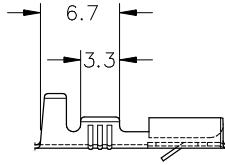


4318.**

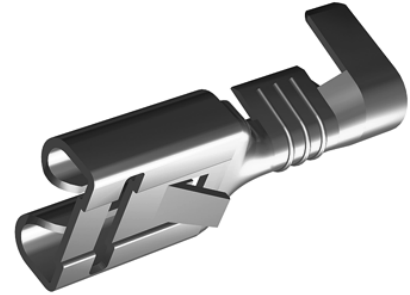
4.8 (.187) TYPE SERIES · RECEPTACLES FOR CONNECTOR



Drawing



Secc.Z-Z



Disclaimer

Data obtained from Escubedo Laboratory essays, using own methodology, cablings, equipment and original crimping tools, done in laboratory conditions and following the indicated standards, errors and omissions excepted. This document has no contractual meaning and it is publicised only for informative purposes. It can be changed without prior notice. The end customer has the sole responsibility to check these characteristics in its environment and with its own components, manufacturing methods and equipment. See also the full range product overview if available. For further information please visit our web site or contact us

Rev. Nr.	Concept	Date	Created/Revised	Approved
A3	Change company name and logo	2021-10-21	E.Roura (laboratory dept.)	M.Codina (engineering dept.)
A2	Max. rated current updated	2020-12-10	E.Roura (laboratory dept.)	M.Codina (engineering dept.)
A1	Datasheet generated automatically [A1]	2019-02-15	Laboratory Dept.	E. Roura

Escubedo Connection Systems, S.A.U. · Ctra. de Girona-Olot Km. 35,5 · 17843 Riudellots de la Creu · Girona · Spain
 Tel.: 34 972 171 706 · Fax: +34 972 171 714 · info@escubedo.com · www.escubedo.com