

Product Overview / Características Principales

6401.01



Description / Descripción: Tab 2.8x0.8 for connector

Macho 2.8x0.8 para conector

For / Para: 2.8 Series receptacle / Hembras de la serie 2.8

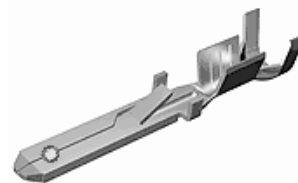
Wire size range / Rango de sección de cable: 0.5 – 1.0 mm²

Max insulator diameter / Diámetro máximo aislante: 3.3 mm

Wire stripping / Longitud de pelada: 4.5 ± 0.5 mm

Application Tool / Util de engaste: **MN6401**

Material / Material: Pre-tin-plated Brass / Latón Pre-estañado



Test values / Resultados de ensayos

Insertion and withdrawal force / Esfuerzo introducción-extracción

	1° insertion/ 1° introducción	1° withdrawal/ 1° extracción	6° withdrawal/ 6° extracción	10° withdrawal/ 10° extracción
CEI760	-	-	-	-
ESCUBEDO	-	-	-	-

Current carrying capacity with maximal suitable wire size (IEC 760)

8 A

Capacidad de paso de corriente con la sección de cable mayor (CEI 760)

Maximal temperature (DIN 61210)

120°C

Temperatura máxima (DIN 61210)

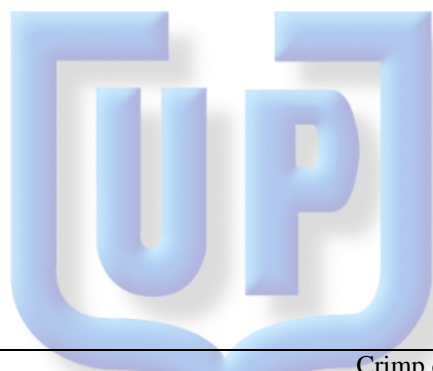
Typical value
Valor típico

Maximal contact resistance with minimal suitable wire size (IEC 760)

-

Máxima resistencia de contacto con la sección de cable menor (CEI 760)

-



Pull-out force / Fuerza de tracción

Wire size / Sección	DIN 46249	typical
0.5 mm ²	60 N	100 N
0.75 mm ²	70 N	150 N
1.0 mm ²	80 N	200 N

Crimp data / Datos de engastadura

Wire size / Sección	Conductor		Insulator / Aislante	
	Altura	Anchura	Altura	Anchura
0.5 mm ²	1.30	2.16	-	2.86
0.75 mm ²	1.40	2.17	-	2.87
1.0 mm ²	1.50	2.18	-	2.88

Values only valid for the application tool specified upwards / Valores válidos únicamente para el útil de engaste especificado arriba

Further information on request / Para más información consultar info@escubedo.com

4	UL logo addition	15/05/2012	David Martinez	Adam calvet
3	Standard max. Temp. change	24/03/2011	David Martinez	Joan Carles Sanchez
2	Modification crimp data	16/07/2008	David Martinez	Joan Carles Sanchez
1	Creation & Derating	16/01/2006	Marc Garangou	Luis Barea
Nr/Nº	Modification/Modificación	Date/Fecha	Name/ Nombre	Approved / Aprobado

Disclaimer:

Data obtained from Escubedo Laboratory essays, using own methodology, cablings and equipment, done in laboratory conditions and following the indicated standards, errors and omissions excepted. This document has no contractual meaning and it is published only for informative purposes. It can be changed without prior notice. The end customer has the sole responsibility to check these characteristics in its environment and with its own components, manufacturing methods and equipment. See also the full range product overview if available. For further information please visit our web site or contact us.